



Ben van Berkel



Title / position
Founder and Principal Architect

Project role
Thought Leader

Degree / credentials
Prof., Arch., AA Dipl. (Hons), (F)RIBA, Hon. FAIA

Years of experience
37

Bio

Ben van Berkel, Founder and Principal Architect of UNS, is renowned for his cutting-edge design, dedication to sustainability, and deep understanding of the impact the built environment has on health and wellbeing. His unconventional approach, which investigates the interconnections between culture and commerce, consistently breaks new creative ground and works to solve real world problems. He brings creative and visionary thinking to an expanding set of expertises within the fields of health, sustainability, technology and economics, delivering evermore value to clients and partners.

After studying at the Rietveld Academy in Amsterdam and the Architectural Association in London, in 1988 he and Caroline Bos founded the Van Berkel & Bos Architectuurbureau, realising iconic projects like the Erasmus Bridge and the Möbius House. In 1999, they established UNS, a global network specialising in design and consulting. Pivotal projects currently include the Lyric Theatre Complex in Hong Kong, the Chamartín Station masterplan in Madrid, FOUR, a large-scale mixed-use project in Frankfurt, the Wasl Tower in Dubai and the Austin Light Rail in Texas.

Committed to education, Ben has held the Kenzo Tange Visiting Professor’s Chair at Harvard GSD where he continues to run a studio on health. He also serves as MArch Thesis Chair and sits on the Advisory Board at IE School of Architecture and Design in Madrid.

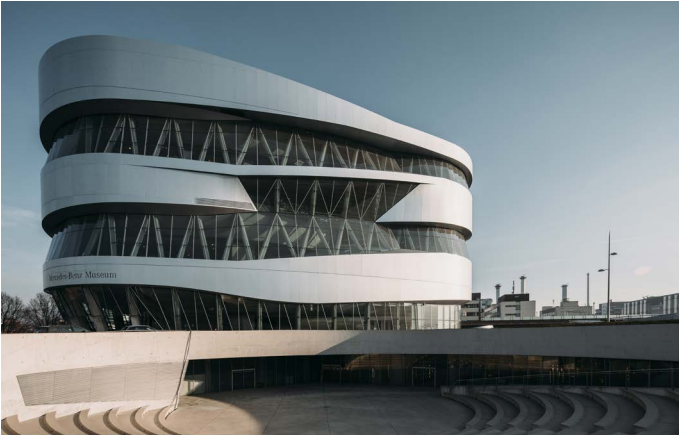
Nationality	Dutch		Languages	Dutch English
Relevant Skills	<ul style="list-style-type: none">▪ Thought Leadership▪ Research & Innovation▪ Lecturing / Teaching		Registration	Registered Architect in The Netherlands, Architectenregister NL – 1.890325.045 Registered Architect in the UK, Germany, Italy
Education	1982 – 1987	Postgraduate (Hons.), Architectural Association, London, UK		
	1979 – 1982	Architecture, Rietveld Academy, Amsterdam, The Netherlands		
Awards	2017 A&W Architect of the Year 2016 Kubus Award - The Royal Institute of Dutch Architects, oeuvre award for contribution to the profession			



Erasmus Bridge

The Erasmus Bridge unites Rotterdam’s North and South, blending innovative engineering with iconic design to enhance connectivity, drive economic growth, and symbolise the city’s industrial heritage and modern transformation.

Location	Size	Value
Rotterdam, The Netherlands	Single Pylon Bridge, 802 m	€ 170,561,000



Mercedes-Benz Museum

UNS’s Mercedes-Benz Museum design revolutionises visitor experience attracting more than 800,000 visitors annually, and creating a cultural landmark that celebrates the brand’s legacy and future.

Location	Size	Value
Stuttgart, Germany	35,000 m²	€ 150,000,000



Van B

Van B introduces a new approach to urban living with adaptable apartments, communal spaces, and innovative design, offering a flexible, community-focused housing model tailored to modern city life in Munich.

Location	Size	Value
Munich, Germany	15,945 m²	Confidential



Booking.com City Campus

Booking.com’s 72,500 m² City Campus in Amsterdam combines BREEAM Excellent sustainability, flexible workspaces, and green public areas, creating a vibrant hub for 5,000 employees and a model for urban innovation.

Location	Size	Value
Amsterdam, The Netherlands	72,500 m²	€ 180,000,000





Caroline Bos



Title / position
Co-founder and Principal Urban Planner

Project role
Principal Urban Planner

Degree / credentials
MSc Urban and Regional Planning

Years of experience
37

Bio

Caroline Bos brings a deep understanding of urban and regional planning to her role as Co-Founder and Principal Urban Planner of UNS, where she focuses on creating vibrant, sustainable urban ecosystems. With a background in Art History and Urban Planning, Caroline’s work bridges theory and practice, shaping cities where people, nature, infrastructure, and culture intersect.

Caroline’s approach to urban design is human-centered and forward-thinking, addressing social, economic, and environmental challenges to create cities that adapt, thrive, and inspire. Through masterplans, urban frameworks, and identity-driven spaces, she ensures that cities honour their past while preparing for the future, all while supporting the people that live in them.

Alongside her practice, Caroline has taught at institutions such as Princeton University and the University of Melbourne, where she emphasises the integration of virtual and material organisation in architectural and urban works.

Nationality

Dutch

Languages

Dutch
English

Relevant Skills

- Thought Leadership
- Research & Innovation
- Lecturing / Teaching

Membership

ISOCARP Member (International Society of City and Regional Planners)
BNSP Member (Dutch Urban Planner Association)

Education

MSc Urban and Regional Planning, Faculty of Geosciences, University of Utrecht, NL
BA History of Art (Hons), Birkbeck College, University of London, UK

Teaching

Honorary Professor, University of Melbourne, Faculty of Architecture, Building and Planning, AU
Guest critic at the Hong Kong University, CN
Guest lecturer at Academy of Fine Arts, Vienna, AT
External Examiner Architectural Association, London, UK



Arnhem Central Masterplan

Arnhem Central enhances urban mobility, by uniting six transport modes and integrating the high-speed rail as a vital link for regional networks and primary gateway from Germany into the Netherlands.

Location	Size	Value
Arnhem, The Netherlands	ca. 160,000 m²	€ 121,700,000



Expo City Dubai

A 438-hectare sustainable urban district master plan. The project integrates residential, commercial, and cultural spaces, designed for 72,000 future residents and workers. Features include energy-efficient infrastructure, LEED Gold targets for buildings, and adaptable spaces, ensuring a lasting legacy of innovation, sustainability, and community.

Location	Size	Value
Dubai, UAE	158,000 m²	Confidential



Karle Town Centre

Karle Town Centre (KTC) is a masterplan for a 62-acre smart city in Bangalore, integrating 10–13 million sq. ft. of residential, commercial, and leisure spaces. KTC features sustainable design, green spaces, and seamless transport connectivity.

Location	Size	Value
Bangalore, India	1,200,000 m²	Not aplicable



Singapore University of Technology and Design

SUTD is a highly sustainable building, incorporating numerous passive design strategies. The design applies natural ventilation principles, cooling techniques, covered walkways, louvred facade shading, open voids, extensive daylight to the interiors. SUTD campus received the Green Mark Platinum rating.

Location	Size	Value
Singapore	106,000 m²	€ 210,000,000



Dana Behrman



Title / position
Director / Senior Urban Designer

Project role
Lead Urban Designer

Degree / credentials
RIBA Part I, MA

Years of experience
18

Bio

Dana Behrman is a Director and Senior Urban Designer at UNS, specialising in urban spatial analysis and large-scale development. She also leads a design studio at IE University in Madrid and the Academy of Architecture in Amsterdam while serving as a guest critic at the Bartlett School of Design in London.

With over 15 years of experience in award-winning international offices, she joined UNS in 2014 to lead the Urban Design Team. Her current projects include mixed-use masterplans in the Netherlands, the UK, and the UAE. Dana’s expertise in site context analysis and urban design ensures innovative, context-sensitive solutions that align with UNS’s vision for sustainable and impactful urban environments.

Nationality

British

Languages

English
French

Relevant Skills

- Master Planning
- Sustainable Desgin
- Public Space Design

Education

2009 – 2010	MA, Research Architecture, Goldsmiths College, University of London, London, UK
2005 – 2007	RIBA Part I, Architectural Association, School of Architecture, London, UK
1994 – 1998	BfA, Film and Animation, School of Visual Arts, New York, US

Teaching

Teaching Associate, IE University, Madrid, Spain
Design Studio Teacher, Academy of Architecture Amsterdam, The Netherlands
Teaching Associate, Harvard School of Design, Cambridge, United States



Expo City Dubai

A 438-hectare sustainable urban district master plan. The project integrates residential, commercial, and cultural spaces, designed for 72,000 future residents and workers. Features include energy-efficient infrastructure, LEED Gold targets for buildings, and adaptable spaces, ensuring a lasting legacy of innovation, sustainability, and community.

Location	Size	Value
Dubai, UAE	158,000 m²	Confidential



Gyeongdo Island

Gyeongdo Island’s masterplan transforms 47ha into a sustainable leisure destination where nature plays the leading role, blending lush gardens and cultural harmony. The new development offers a rich programme of amenities, year-round activities, and infrastructure.

Location	Size	Value
Gyeongdo Island, South Korea	47 ha	Confidential



Brainport Smart District

Brainport Smart District reimagines urban living with 1,500 homes and 12 hectares of business space, built over 10 years. Featuring circular systems, shared energy, smart technologies, and revolutionary transport, it’s a user-driven, sustainable “living lab” shaping the future of cities.

Location	Size	Value
Helmond, The Netherlands	150 ha	Confidential



Boxmeer Health Campus

Health Campus Boxmeer represents healthcare innovation with a sustainable master plan integrating green spaces, collaborative hubs, and resilient design. Featuring pedestrian-friendly routes, integrated parking, and vibrant clusters, it’s a dynamic environment shaping the future of health and well-being.

Location	Size	Value
Boxmeer, The Netherlands	15 ha	Confidential



Filippo Lodi



Title / position
Director / Senior Creative Strategist

Project role
Project Director

Degree / credentials
**MBA, MA Architecture, MSc
Architecture & Civil Engineering**

Years of experience
22

Bio

Filippo Lodi is a Director at UNS who is at the forefront of architecture through insight-driven design, experience innovation, and human-centric solutions. Leading a multidisciplinary team of architects, interior designers, urban planners, creative strategists, and product designers, he integrates strategic thinking with design execution, ensuring environments are not just visually compelling but deeply purposeful.

After graduating from the Städelschule in Frankfurt am Main, Filippo joined UNS in 2008 where he works to connect digital interfaces, physical spaces, and emerging technologies in anticipation of human needs and shaping future experiences. Filippo spearheaded pioneering projects such as the Porsche Retail Experience in Changsha, Karle Town Centre, a future-forward urban district in Bangalore, Wasl Tower, a high-performance mixed-use skyscraper in Dubai, and The Coolest White, an ultra-durable paint mitigating urban heat.

Beyond design, Filippo advances the industry dialogue by challenging conventional thinking. Through workshops, guest critiques, and lectures at Harvard GSD, The Bartlett, TU Darmstadt, and the University of Bologna, he shifts the focus from aesthetics to strategic, research-driven impact. By bridging research, strategy, and execution, Filippo ensures design is not just seen but truly felt, understood, and transformative.

Nationality

Italian

Languages

Italian
English
Dutch

Relevant Skills

- Stakeholder management
- Research & Innovation
- Client relations

Registration

Registered Architect in The Netherlands, Architectenregister NL - 1.090715.027

Education

2014 - 2016

2006 - 2008

1998 - 2006

2003 - 2004

MBA Business Administration, Management, and Operations, UvA, NL

MA Advanced Architectural Design, Städelschule, Frankfurt am Main, DE

MSc Architecture/MSc Civil Engineering, University of Bologna, IT

Civil Engineering, University of Southampton, Southampton, UK



Porsche Retail Experience

Porsche Studio Changsha blends hospitality, culture, and adaptability to create an immersive brand experience, setting a new standard for customer engagement and future-focused retail strategies.

Location

Changsha, China

Size

318 m²

Value

Not aplicable



Karle Town Centre

Karle Town Centre (KTC) is a masterplan for a 62-acre smart city in Bangalore, integrating 10–13 million sq. ft. of residential, commercial, and leisure spaces. KTC features sustainable design, green spaces, and seamless transport connectivity.

Location

Bangalore, India

Size

1,200,000 m²

Value

Not aplicable



Wasl Tower

A 302-metre mixed-use super-high-rise in Dubai, featuring residential, commercial spaces and a hotel, operated by Mandarin Oriental. The tower integrates advanced shading and cooling systems, achieving sustainability in extreme climates.

Location

Dubai, UAE

Size

106,534 m²

Value

Confidential



Kutaisi International Airport

Kutaisi International Airport integrates efficiency, cultural symbolism, and sustainability, creating a modern gateway for Georgia that enhances passenger flows, operational performance, and the country's global connectivity.

Location

Kutaisi, Georgia

Size

Terminal: 4,500 m²

Value

Terminal: € 10,000,000



Ren Yee



Title / position
Associate Design Director / Design Strategist

Project role
Senior Creative Strategist

Degree / credentials
MSc Architecture

Years of experience
17

Bio

Ren is a Design Strategist at UNS, specializing in creating innovative, people-centered solutions for architectural and urban projects. He has a unique ability to align the visions of stakeholders, sustainability goals, and client needs, transforming ideas into impactful strategies.

With a strong foundation in design thinking and user research, Ren navigates complex challenges and promotes collaboration across teams. His approach is grounded in practical methods and insights into human behavior, ensuring designs that are intuitive and adaptable.

Ren is dedicated to creating lasting value through thoughtful and sustainable design. By utilizing digital tools, prototyping, and data analysis, he redefines user experiences and contributes to the development of forward-thinking, functional, and meaningful built environments.

Nationality

Malaysian

Languages

English
Malay
Cantonese
Mandarin
Taiwanese

Relevant Skills

- Strategy Forecasting
- Experience Design
- Research & Innovation

Registration

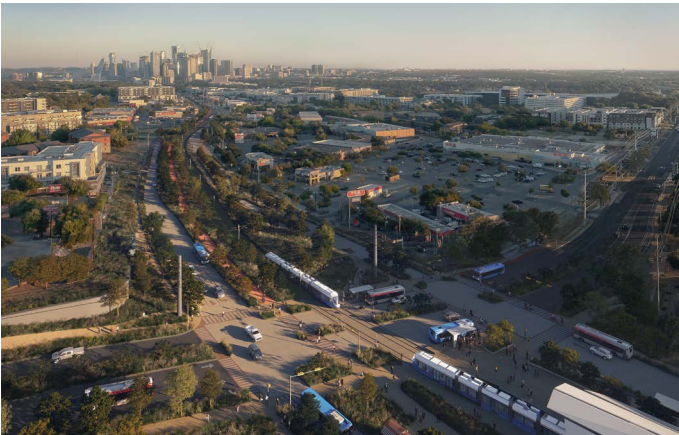
Registered Architect in The Netherlands and United Kingdom

Education

2005 - 2007 MSc Architecture, Delft University of Technology, Delft, NL
2001 - 2004 Bachelor of Design, University of Putra Malaysia, Kuala Lumpur, Malaysia

Teaching

Teacher in Practice, IE University, Madrid, Spain



Austin Light Rail

UNS's Austin Light Rail design transforms mobility in Austin with a sustainable, people-first transit system. Spanning 10 miles with 15 stations, it connects Austin's major job centers, education hubs, and iconic destinations while pioneering cognitive design to enhance user experience, reduce stress, and create a vibrant, inclusive transit experience.

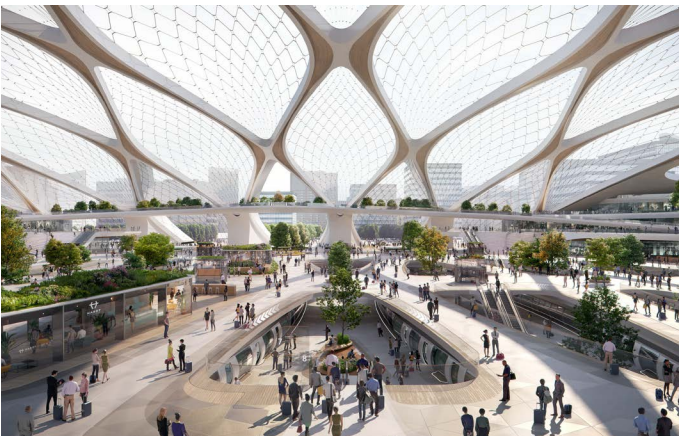
Location	Size	Value
Austin, United States	15 stations, 9,8 miles ROW	Not aplicable



Brainport Smart District

Brainport Smart District reimagines urban living with 1,500 homes and 12 hectares of business space, built over 10 years. Featuring circular systems, shared energy, smart technologies, and revolutionary transport, it's a user-driven, sustainable “living lab” shaping the future of cities.

Location	Size	Value
Helmond, The Netherlands	150 ha	Not aplicable



Hardt Hyperloop

The Hardt Hyperloop Hub is a vision for the future of European Hyperloop stations, and a study of how the Hyperloop can incorporate itself into cities and towns of different sizes and contexts. Modularity is what makes this system scalable, resilient and adaptable to existing conditions.

Location	Size	Value
Hardt, The Netherlands	-	Not aplicable



Singapore University of Technology and Design

SUTD is a highly sustainable building, incorporating numerous passive design strategies. The design applies natural ventilation principles, cooling techniques, covered walkways, louvred facade shading, open voids, extensive daylight to the interiors. SUTD campus received the Green Mark Platinum rating.

Location	Size	Value
Singapore	106,000 m²	€ 210,000,000